





We believe that every home is more than just a structure; it is a sanctuary for the soul. Our architect, combines her passion for interior design and landscaping with a unique sensibility to create spaces that are not only aesthetically stunning, but also elevate your energy and well-being.

Each project is a journey towards harmony and balance. Inspired by the principles of nature and spiritual connection, we design homes that are a balm for the soul; places that you don't just live in, but that live in you.

Our designs focus on positively stimulating and influencing you, embracing and enhancing the best version of yourself. Each space is crafted to promote physical, emotional, and spiritual well-being, creating homes that not only heal but also inspire.

Every project is a manifestation of our commitment to creating spaces that reflect who you are and who you aspire to be. We invite you to discover how our designs can transform your way of living, leading you to a place where every detail resonates with your deepest self.



Exteriors:

The exterior of this villa radiates a warm Mediterranean elegance, defined by its natural textures, soft earth-toned façades, and timeless architectural composition. Rather than stark contrasts, the design embraces harmony — blending stone walls, rendered volumes, and cascading greenery to create a home that feels organically rooted in its surroundings.

Interiors:

Inside, the villa reveals a serene and sophisticated atmosphere, where contemporary Mediterranean design meets understated luxury. The open-plan layout flows effortlessly between the living, dining, and kitchen areas, creating a harmonious spatial continuity that enhances both comfort and functionality.

Kitchens and Bathrooms:

The kitchens blend functionality with style, equipped with state-of-the-art appliances, sleek cabinetry, and sophisticated countertops that reflect a keen attention to detail. Bathrooms feature contemporary fixtures and fittings, including matte black faucets and showerheads, which stand against pale textured ceramic tiles for a look that is both bold and timeless.

Bedrooms:

The bedrooms are conceived as intimate sanctuaries — serene, enveloping spaces where architecture, materiality, and light work together to promote rest and wellbeing. Rather than relying on ornamentation, the design focuses on purity of form, soft textures, and a calming neutral palette.

Technology and Security:

Advanced home automation systems offer convenience and security, with features that can be controlled via smartphone or tablet. Integrated security systems ensure peace of mind, with surveillance and alarm systems that are both discreet and effective.

Eco-Friendly Aspects:

Sustainability is key in the design of OASIS 005. The homes are constructed with energy efficiency in mind, utilizing materials and systems that reduce the environmental footprint while ensuring comfort for its inhabitants.

Community and Location:

Situated in a prime location, OASIS 005 offers a balance of privacy and accessibility. The project is located within the prestigious residential community of Altea Hills, in the town of Altea. This is a highly consolidated urbanisation, known for its security, exclusivity, and well-established infrastructure, with all essential amenities just minutes away.

Residents also benefit from direct and convenient access to the renowned Marina Greenwich (Puerto Deportivo Luis Campomanes), a vibrant marina offering a wide selection of restaurants, leisure areas, nautical services, and boutique experiences, enhancing the Mediterranean lifestyle that defines OASIS 005.

In addition, the area is home to a five-star superior hotel fully dedicated to wellness and spa experiences, the prestigious ZEM Wellness Clinic Altea, located within Altea Hills itself. This exclusive retreat focuses on health, wellbeing, and holistic treatments, further elevating the luxury lifestyle and residential appeal of the location.

































SUP. ÚTILES	
Planta baja	
Escalera	6.48m ²
Vestíbulo	11.90m ²
Paso	14.44m ²
Cocina-comedor	45.28m ²
Salón-estar	35.90m ²
Dorm.1	30.75m ²
Baño 1	12.90m ²
Vestidor	8.32m ²
Porche	30.76m ²
Total	196.73m²

SUP. ÚTILES	
Planta alta	
Escalera	6.81m ²
Vestíbulo	13.12m ²
Dorm. 2	22.00m ²
Baño 2	7.22m ²
Dorm.3	15.50m ²
Baño 3	8.35m ²
Dorm. 4	15.50m ²
Trast. ext.	4.55m ²
Porche aparc.	44.18m ²
Total	137.23m²

SUP. ÚTILES	
Planta sótano	
Escalera	6.19m ²
Vestíbulo	5.34m ²
Instalaciones	8.33m ²
Trastero	37.36m ²
Depuradora	21.42m ²
Depósito	17.70m ²
Total	96.34 m²

4
Bedrooms

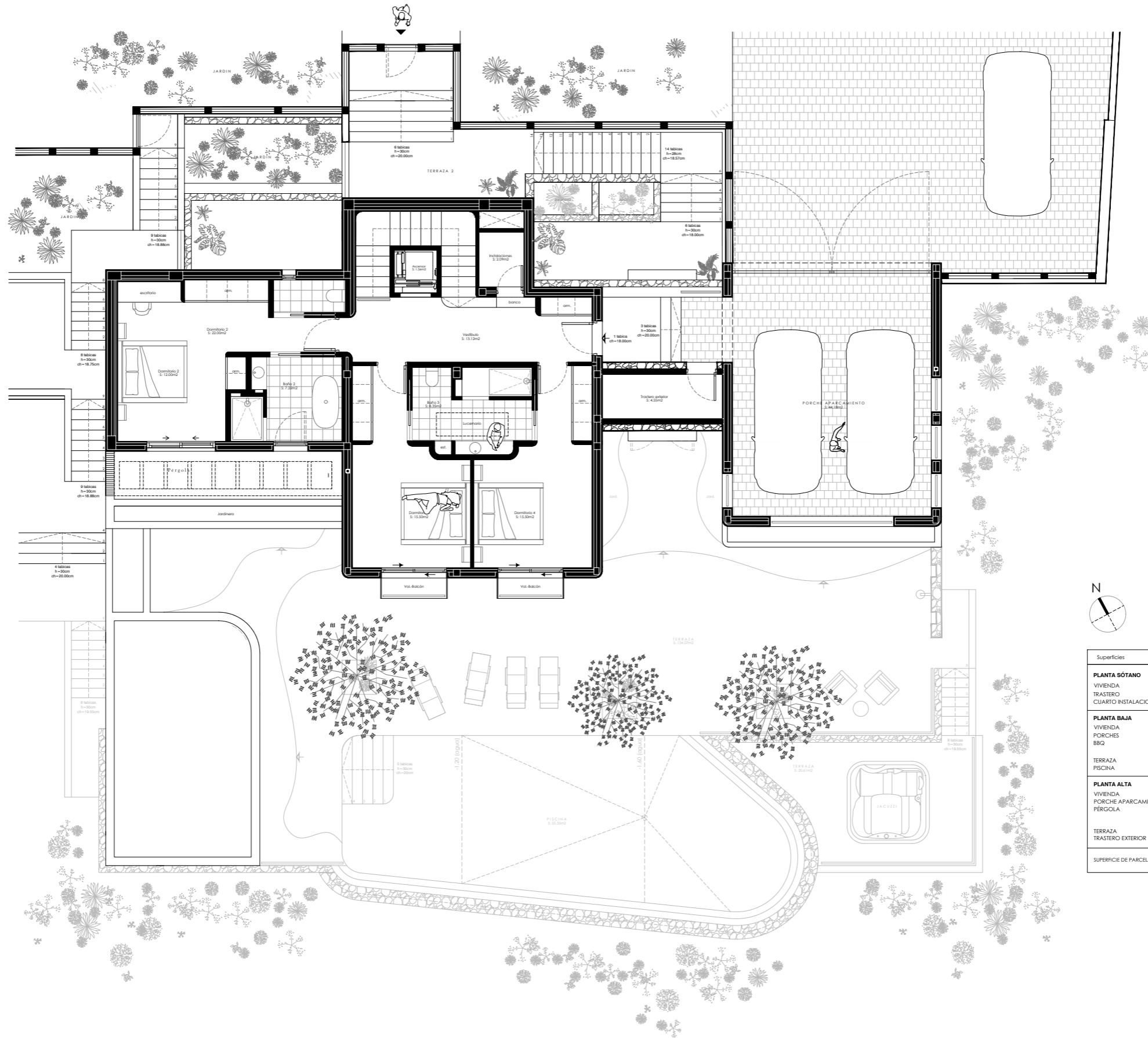
3
Bathrooms

496,27 m²
Built area

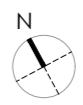
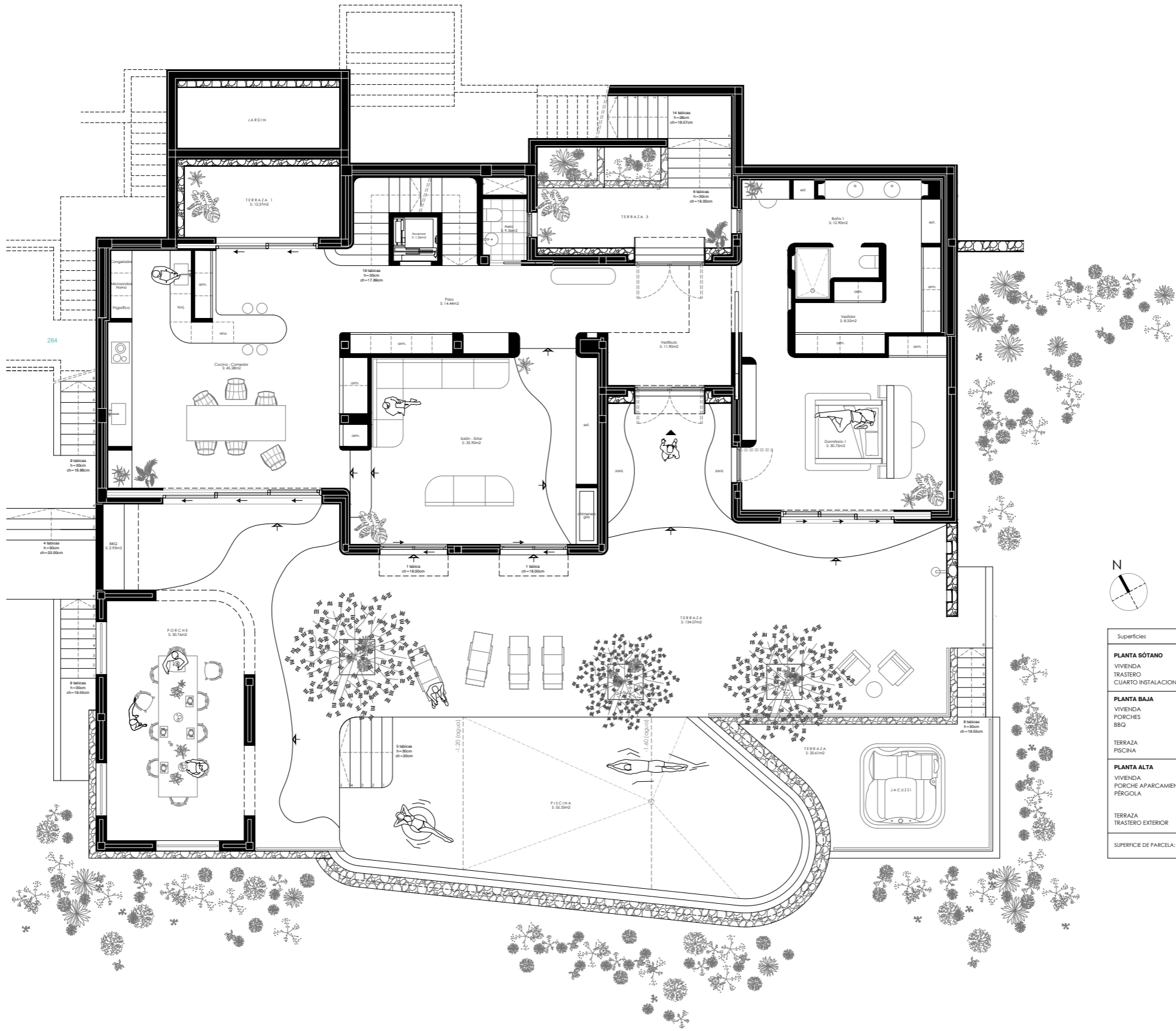
289,05 m²
Aux Area

785,32 m²
Total area

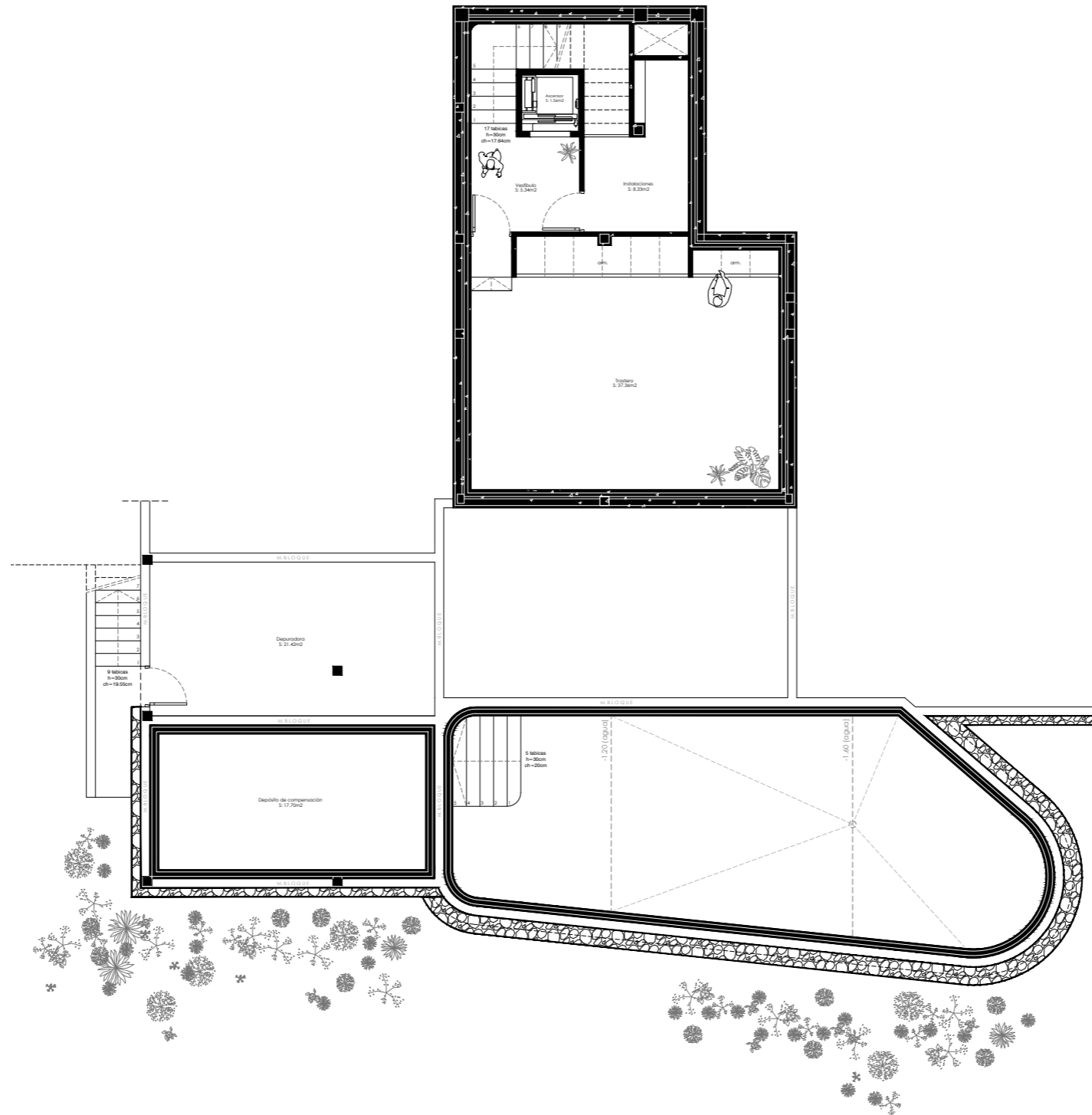
1.297 m²
Plot



Superficies	Construidas
PLANTA SÓTANO	
VIVIENDA	14.85 m ²
TRASTERO	45.80 m ²
CUARTO INSTALACIONES	13.71 m ²
PLANTA BAJA	
VIVIENDA	204.27 m ²
PORCHES	30.76 m ²
BBQ	2.93 m ²
TERRAZA	176.41 m ²
PISCINA	55.35 m ²
PLANTA ALTA	
VIVIENDA	112.98 m ²
PORCHE APARCAMIENTO	44.18 m ²
PÉRGOLA	9.66 m ²
TERRAZA	10.18 m ²
TRASTERO EXTERIOR	7.00 m ²
SUPERFICIE DE PARCELA: 1297.10 m ²	



Superficies	Construidas
PLANTA SÓTANO	
VIVIENDA	14.85 m ²
TRASTERO	45.80 m ²
CUARTO INSTALACIONES	13.71 m ²
PLANTA BAJA	
VIVIENDA	204.27 m ²
PORCHES	30.76 m ²
BBQ	2.93 m ²
TERRAZA	176.41 m ²
PISCINA	55.35 m ²
PLANTA ALTA	
VIVIENDA	112.98 m ²
PORCHE APARCAMIENTO	44.18 m ²
PÉRGOLA	9.66 m ²
TERRAZA	10.18 m ²
TRASTERO EXTERIOR	7.00 m ²
SUPERFICIE DE PARCELA:	1297.10 m²



Superficies	Construidas
PLANTA SÓTANO	
VIVIENDA	14.85 m²
TRASTERO	45.80 m²
CUARTO INSTALACIONES	13.71 m²
PLANTA BAJA	
VIVIENDA	204.27 m²
PORCHES	30.76 m²
BBQ	2.93 m²
TERRAZA	176.41 m²
PISCINA	55.35 m²
PLANTA ALTA	
VIVIENDA	112.98 m²
PORCHE APARCAMIENTO	44.18 m²
PÉRGOLA	9.66 m²
TERRAZA	10.18 m²
TRASTERO EXTERIOR	7.00 m²
SUPERFICIE DE PARCELA:	1297.10 m²

Specifications and Materials

The following document details the materials, finishes, and specifications selected for the construction of the property. Each element has been carefully chosen to ensure the highest standards of quality, functionality, and aesthetics. From structural components to final interior finishes, every aspect reflects our commitment to excellence and timeless design.



CERAMIC CLADDING AND COVERINGS
ACCESSORIES

INMOIFACH
donde viven tus sueños

Interior flooring.
The same flooring will be used in outdoor areas but it will be anti-slip.
LIVING CERAMICS - Bera&Beren - Beren Sand - 90x90x0,9/2cm



Bathroom tiling
**Beren Sand Land - Beren Sand -
60x120**



Bathroom tiling
**Beren Sand Lane - Beren Sand -
60x120**



TIME

Washbasin in all the bathrooms.
Single-lever male washbasin XXL



TIME
Shower head.



TIME
Built-in thermostatic



ROCA
Compact concealed cistern



ROCA
Compact concealed cistern



ROCA ONA
Rimless compact wall hung toilet made of white sanitary porcelain with horizontal outlet.



BATHROOM FURNITURE – CUSTOM CARPENTRY SERIES

All bathroom furniture units are custom-made on site by the project's carpentry workshop, specifically designed and manufactured to fit each space. This allows full adaptation to the architectural layout, ensuring optimal use of dimensions, alignments and finishes.

The furniture is produced using high-quality wood veneers and lacquered finishes, selected according to the interior design of the property. Interiors are executed with durable technical boards and integrated storage solutions, combining functionality with refined aesthetics.

KITCHEN



Kitchen worktop & Cladding
LAMINAM Serie Fokos - Sale



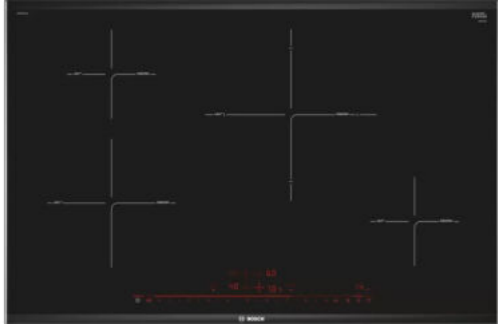
Kitchen furniture.
Natural oak wood veneer on plywood panels, custom-made in factory



* All materials must be chosen before starting construction. Once the construction has begun, nothing can be changed.

Kitchen island clad in microcement finish.





Sinks:

- colour similar to the countertop

BOSCH brand home appliances:

- built-in oven
- built-in micro wave
- induction hob
- built-in dishwasher under the countertop

- Extractor hood integrated on roof

Faucet:

- Sink Mixer in black with Epoxy plating with high resistance and adherence

INTERIOR CARPENTRY



Oak veneered passage doors. 2400 cm high and 820 cm passage, whenever the project allows it. If due to technical conditions of the project these maximum measures cannot be set, they will be adapted to the maximum height and width that is allowed in the project

Concealed hinge
Magnetic locking door



Cabinets - Exterior
F685 ST10 Acapulco



Cabinets - Interior
CLAY GREY U727 ST9

Built-in wardrobes with oak frames and outer structures in natural oak veneer. The door panels feature a textile-effect finish by Egger, Acapulco model, applied on the exterior faces, adding warmth and texture to the design.

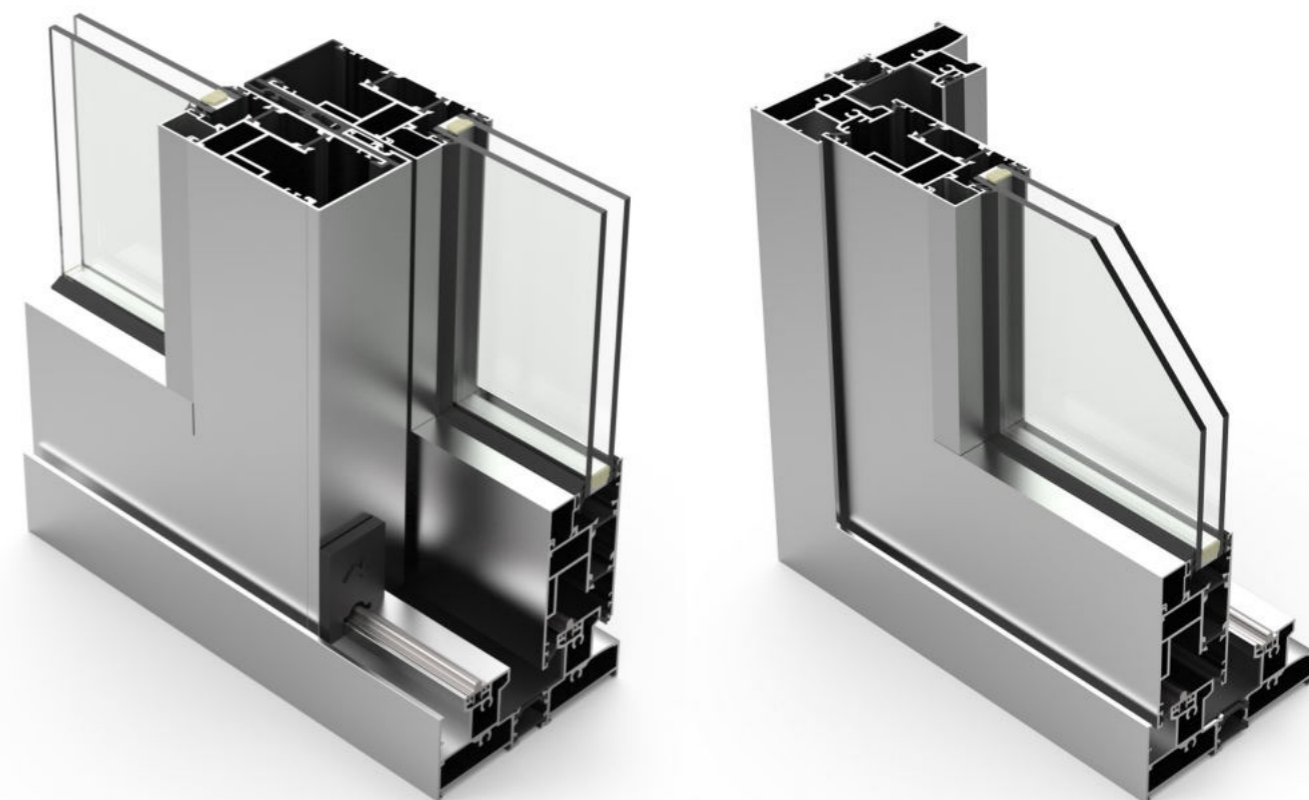
The interior of the wardrobes is finished in lacquered melamine in clay grey color, providing a refined contrast with the oak exterior while ensuring durability and easy maintenance. Inside, the wardrobes are equipped with a top shelf and a hanging rail as standard.



EXTERIOR CARPENTRY

ALUGOM

ALUGOM SERIE MATRA 110



Glasses : 4+4 | camera | 6

* The glasses may be increased by request of the energy efficiency code

ELECTRICITY & LIGHTING



EFFAPEL APOLO 5000

The APOLO 5000 Series stands out for its sober design and straight lines.

Its discreet presence confers a minimalist and distinguished touch to your decoration.

We recommend installing it throughout the house except in bathrooms and kitchens.



EFFAPEL APOLO 5000

We recommend installing it in bathrooms and kitchens



ELECTRICAL PANEL OF THE DWELLING



CEILING LIGHT SPOTS

They are installed throughout the interior of the house according to the electrical plan of the project.

Led light 3000k



BLACK LANTERNS OUTSIDE THE HOUSE

Lanterns will be installed on the four facades of the house according to the electrical plan of the project.



STREET LAMPS AT THE ENTRANCE TO THE STREET DOOR

Street lights will be installed on the pillars of the pedestrian and vehicle gate at the entrance to the plot.



VIDEO INTERCOM

Video intercom system for exterior door opening. Includes app for control from mobile phone or tablet.



SECURITY SYSTEM

Your family is safe with AJAX SYSTEM alarm

All this can be achieved by a remote control via the application.

It includes 3 indoor sensors + Keyboard

Possibility of extending areas (extra)

Possibility of installing security cameras (extra)

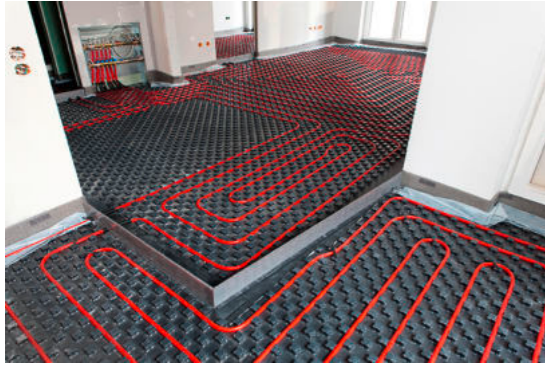


SECURITY

CLIMATISATION

HEATING & HOT WATER

Heating and DHW by aerothermal energy efficiency system in compliance with the CTE. Ducted air conditioning with built-in machine. This system provides the perfect combination of underfloor heating and ducted air conditioning.



Underfloor heating:

- 2 collector boxes (1 per floor)
- Through hot water pipes



Heat pump Baxi PLATINUM BC Plus Monobloc 2 10 MR, monobloc outdoor unit, single-phase, power 10 kW, 8600 cooling capacity, COP 4.95, EER 4.55 and energy efficiency A+++.



DHW storage tank with a capacity of 200 litres and 1.81 m² of exchange surface. Energy class C. Floor-standing installation.

AIR CONDITIONING

Ducted air conditioning with built-in machine.

- Installation of ducts upstairs and downstairs
- Air conditioning machine by floor



VENTILATION SYSTEM

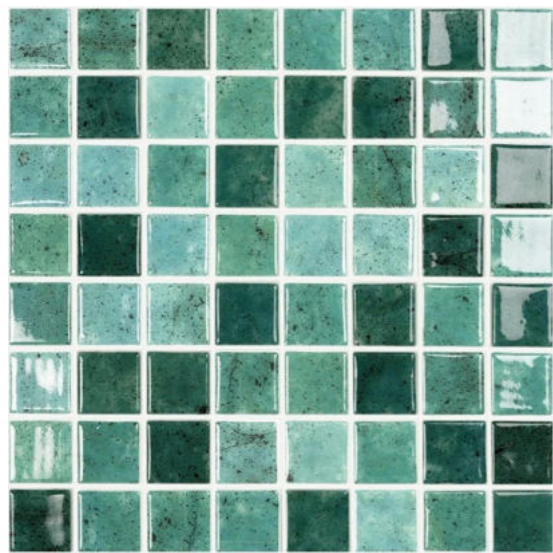
Ventilation system of the house with mechanical extraction of the interior air through ducts from the kitchen and bathrooms to the chimney on the roof.



OUTDOOR BARBECUE DETAIL



SWIMMING POOL & IRRIGATION SYSTEM



Mosaic NATURE BALI - GLASSPUR
Overflowing pool



ASTRALPOOL Victoria Plus
1 x swimming pool filtration pump



SWIMMING POOL FILTRATION SYSTEM
ASTRALPOOL ICE D.750



RAIN BIRD IRRIGATION PROGRAMMER
- 4 zones
- motorised solenoid valves

The project does not include any garden areas or plants.

The descriptions and visualizations presented in this document shall not constitute an offer as defined in the Civil Code and are published solely for information purposes.

The visualizations are purely illustrative, and cannot be treated as final execution designs.